

St. Mary's School

Ecce Ego Sum Mitte Me

January 2026

January 14th:
Soup Day

January 16th - 17th :
Big Storm BB
Tourney

January 19th - 21st :
Grad Photos - Make
sure you book a time!

January 21st:
Last Day of Regular
Classes (Semester 1)

January 23rd - 24th :
Black & Blue BB
Tourney (SMS/TCHS)

January 22nd - 28th :
Exam Week

January 29th:
1st Day of Semester 2



News from our St. Mary's Band Booster Club



St. Mary's School is sad that we had to cancel our Christmas Band Concert on Wednesday, December 19th due to poor weather. Our students worked very hard in the last few months and were looking forward to an evening of festive tunes. Each class has recorded a portion of the concert and those videos are available to view on Google Classroom. Please ask your son/daughter to log in to show you what their class could do.

Thank you to everyone who prepared food for our bake sale. We hope you were able to find a good use for the goodies.

It's not really that far away. The St. Mary's Spring Concert will be held on Wednesday, May 13th at 7pm in the school gym. Hopefully this date will be warmer than December 19th. Please keep this date open for our students.

The St. Mary's Jazz band is looking for new members. It is a great time for any band student from grades 6 to 12 to join. We rehearse every Tuesday from 3:15 to 4:15. If you are thinking of joining, bring a friend! The more the merrier.

The St. Mary's Band Booster Club will be selling Ben's Beef Jerky as it's last fundraiser of the year. Order forms will go out February 2nd. The jerky comes in original, Teriyaki, Smoky River and Sweet and Spicy and is \$25 a bag. Order forms and payment must be returned to the school no later than Friday, February 24th. Jerky will be delivered the first week of March. Please see any Junior or Senior Band member in February to place your order.

Soup Day :

January 14th



If any parents would like to bring a pot of soup, please contact our school office at 403-223-3165

Please consider signing up to bring a pot of soup for the following soup days:

Jan. 14th

Feb. 11th

Mar. 18th

Apr. 15th

May 13th

Contact our school office to sign up.

ST. MARY'S SCHOOL CELTICS BOTTLE DRIVE

St. Mary's Celtics Basketball team is raising funds to help cover tournament travel/accommodation costs by running a bottle drive through our local Taber Bottle Depot.

December 16th - January 26th

Any popcan/bottle donations can be dropped off directly at the Taber Bottle Depot. Please let the staff at the depot know to add the donations to the St. Mary's Celtics account.
Thank you in advance!!



5427 - 50th Street
Taber, AB T1G 1M2



Phone: 403-223-3165
smtadmin@holyspirit.ab.ca

January 5, 2026

RE: Student Attendance During Exam Week

Dear Parents & Guardians,

Wednesday January 21st is the last day of regular classes in the first semester at St. Mary's School. The exam schedule, including both final and mid-term examinations, commences January 22nd and continues until January 28th. **Please be aware that all JH exams begin at 8:45am and high schools vary based on the day of their exam.** Please be diligent in ensuring students arrive on time for exams as late entries often cause significant disruption to students already writing and important writing details are communicated at the beginning of every exam. Additionally, students will not receive extended time when arriving late to an exam.

Students who miss an exam will not be permitted to rewrite the exam unless they have communicated to their teacher the nature of the absence prior to the exam. In cases of emergency circumstances, school administration will intervene on behalf of the student to ensure a reasonable solution. The exam make-up day is only for students who have rescheduled exams prior to exam week. Students who do not communicate the need for a rescheduled exam in advance, will not be permitted to write on the exam make-up day.

As a reminder, regular classes do not run during the exam schedule and students will not be under teacher supervision after the completion of their exams. The school library will remain open during the exam schedule as a quiet place for students to study. While the school remains open for administration purposes, students are to leave after the completion of their exams. Please contact school administration for clarification or inquiries.

Exams can bring extra stress upon students. While the school staff works faithfully to prepare students for exams, parents and guardians ought to ensure that students are studying, getting enough sleep, and managing stress. Please contact the school's counseling services for support regarding the strategies parents and guardians can utilize for students during exams.

Sincerely,

Josh Van Uden
Associate Principal
St. Mary's School

Exam Schedule Days

High School Exams - *Start at 12:15 pm Jan 22, 26 ----- Start at 8:45am Jan 23, 27						
	Jan 21	Jan 22 - 12:15pm	Jan 23- 8:45pm	Jan 26- 12:15pm	Jan 27- 8:45am	Jan 28
Grade 12		ELA 30-1	Chem 30	Math 30-1	ELA 30-1 (Part B)	
	ELA 30-2	ELA30-2	Chem 30	Math 30-2		
Grade 11		Math 20-1	Physics 20	Bio 20	Social 20-1	
		Math 20-2		Bio 20	Social 20-2	
		Math 20-3				Exam
						Conflict/Make
Grade 10		Social 10-1		Science 10		Up Day
		Social 10-2		Science 14		
Junior High Midterms/ Exams - Exams Start at 8:45 am						
	Jan 21	Jan 22	Jan 23	Jan 26	Jan 27	Jan 28
Grade 9		ELA 9		Science 9		
Grade 8		Science 8	ELA 8	Math 8	Social 8	
Grade 7		Math 7	Science 7	Social 7	ELA 7	Exam
						Conflict/Make
Grade 6		Math 6	Social 6	ELA 6	Science 6	Up Day

BASKETBALL

HOODIES

Megan Drouin has offered to make basketball hoodies for any interested St. Mary's athletes. A black hoodie with the logo below will be available in: Youth XL, Small, Medium, & Large.



Cost of the hoodie with the logo: \$35

Cost of the hoodie with the logo and your name: \$40

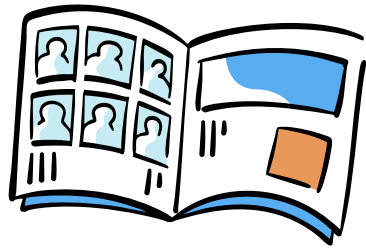
**PRE-ORDERS AVAILABLE:
JANUARY 9TH - 18TH**

The turnaround time is about 1 week after the pre-order deadline.
Anyone interested can place an order through:

SchoolCashOnline

2024-2025 Year Books Are Still Available

We still have some 2024-2025 Yearbooks available.
Come grab your copy! (\$40)



YEARBOOK

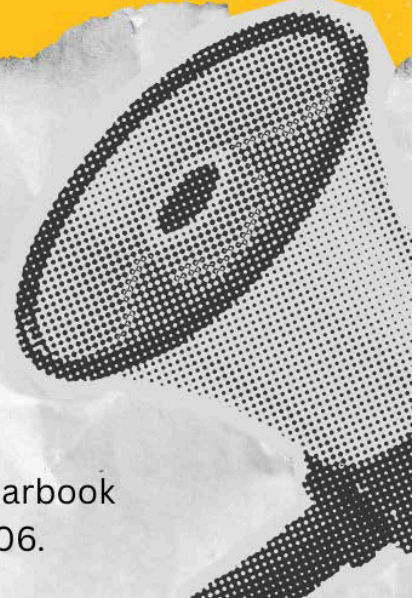
SMS YEARBOOKS FOR SALE



We have extra copies of past SMS Yearbooks that could use a new home. These are all new or very gently used yearbooks that have been sitting in storage. Grab a copy of any of the following years for only \$10:

2001-2002	2008-2009	2017-2018
2003-2004	2010-2011	2018-2019
2004-2005	2013-2014	2019-2020
2005-2006	2014-2015	2020-2021
2006-2007*	2015-2016	2021-2022
2007-2008	2016-2017	2023-2024

*2006-2007 - This yearbook is a 50th anniversary yearbook that also celebrates SMS history from 1956-2006.





Donate School Supplies

Just a reminder that we accept all gently used school supplies at our school. We place these items out for everyone to access for FREE! It helps to save items from the landfill and with the cost of everything lately, every little bit helps!



POEDs at SMS

Definitions:

POED: Personally Owned Electronic Devices we are referring to personally owned cell phones, tablets, laptops, and wearable technology such as smartwatches or earbuds.

The following will be the policy followed at SMS:

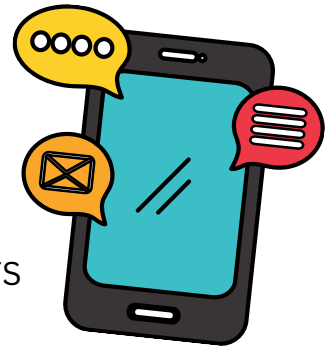
Grade 6-9

SMS will be moving to a “no cell phone use during the school day” policy for Grades 6–9. Students may bring phones to school, but they must remain stored in lockers during the day, including morning wait time and lunch breaks. If a student needs to contact home, they may use a classroom phone or receive special permission to use their own device.

POEDs Not Permitted during the following:

- 8:00-3:15 (12:05 on Fridays)
- No POEDs in the atrium in the morning or at Lunch time

Cell phones may be stored in the locker or in the office, but NOT IN POCKETS



Grade 10-12

POEDs Not Permitted during the following:

- 8:30- 11:33 (12:05 on Fridays)
- 12:12- 3:14

It must be more than an arm’s length away from the student, and silenced or powered down and not seen and not heard.

POEDs Permitted during the following:

- 8:00-8:30: School is open for Breakfast Program
- 11:33-12:12: Lunch
- When they have a spare, they are allowed to have them in the hallway, atrium and library.
- Flex Time in the classroom under the teacher’s supervision

If the parent/guardian needs to contact the student, please call our school office at 403-223-3165. We will get your child for you.



Do You Want to Learn **NIITSI'POWAHSIN** The Language of Our Territory?

BLACKFOOT 1000 DUAL CREDIT

Spoken Blackfoot for beginners, offered through the University of Lethbridge at no cost. Tuition is fully covered through University funding provided by the U of L Iniskim Mastercard Foundation Fund.

This course supports the continuation and revitalization of Blackfoot language, with language acquisition grounded in culture, history, geography, and relationship to land.

A land-based learning day will serve as a culminating experience.

University of
Lethbridge



COURSE DETAILS

DATES:

January 28 – April 23

SCHEDULE:

Mondays & Wednesdays
11:00–12:15

FORMAT:

Online (Microsoft Teams)

INSTRUCTOR:

Caroline Russell

PREREQUISITES:

None. Instruction will be adapted to students' backgrounds and prior knowledge.

CONTACT:

Mark Boschee for registration details.
boscheem@holyspirit.ab.ca
(587) 220-4358


Ecce Ego Sum Mitte Me




Lethbridge
Competitive
Climbing


2026 OPEN HOUSE


Discover How Your Young Climber Can Reach Great Heights!

 **Date:** Sunday, January 18, 2026

 **Time:** 5-7pm

 **Location:** Coulee Climbing, 1-1602 3 Ave S

 **Ages:** 8-14 years

 **Cost:** FREE

Scan to Register or Talk to the
Coulee Climbing Front Desk



What's Happening

- Competition Style Technique Building
- Coaching & Support for New Athletes!
- Parent Info Session | Learn about LCC and Discover Provincial and National Opportunities for your Kids

Why Attend

- Experience the Excitement of Competitive Climbing
- Discover what Separates Competition Climbing from Climbing Classes
- Discover how YOUR kids can Develop their Skills and Confidence!
- Connect with Our Community

No Pressure, Come to Have Fun Climbing and Learn More about LCC!

Sponsored by:



Supported by:



Email lethbridgeclimbing@gmail.com with any questions or visit www.lethbridgecompetitiveclimbing.com

CAREER EXPLORATION SESSION

YOGA INSTRUCTOR



CAREER
TRANSITIONS

**Wednesday, January 14th
4:30pm**

Nikki is a dedicated Yoga Instructor & Registered Kinesiologist who has built a meaningful, purpose-driven career in the wellness world. Blending movement, mindfulness and science, she's created a path that supports both high-performance athletes and everyday individuals. Passionate about nervous system health and living in alignment, Nikki has carved out her own niche in the industry and she's excited to share the realities, opportunities, and fulfillment that come with choosing a career in yoga and holistic wellness.

Nikki, owner of Namaste Nikki Yoga, will host this CES on a career that can inspire you have unique experiences in your life, finding balance and calm in supporting a wellness journey to a fulfilling career.

If wellness has ever been an interest of yours, this session will be helpful. No matter how inflexible you may feel, a yoga practitioner might be for you. Join us for this session!!!



Healing through the rhythm
of your breath



**Scan the QR Code to
REGISTER for this *FREE*
virtual session!**

Once registered, you will receive
an email with the link, plus
additional information regarding
the event.



LETHBRIDGE LITTLE LEAGUE

2026 Spring House League Registration Open

January 6 - February 28

Lethbridge Little League is the governing association for Little League Baseball within the City of Lethbridge. Players who are interested in playing baseball in Lethbridge should register using the information below. We are excited for another exciting season of Little League Baseball.

Register online at: www.lethbridgelittleleague.com

<u>AGE</u>	<u>DIVISION</u>	<u>FEE</u>	<u>GAME DAYS</u>
4-5	T-Ball	\$165	Mon/Wed
6-7	Coach Pitch	\$165	Tue/Thurs
7-8	Rookie	\$225	Mon/Wed
9-11	Minor	\$285	Tue/Thurs
10-12	Major	\$285	Mon/Wed
13-14	Teenage	\$285	Tues/Thurs
15-16	Teenage	\$285	Mon/Wed

**Make up games and special events may be scheduled on Friday-Sun.

*** Please note **residency and school attendance eligibility rules** apply: **Players can play in the league where they either live or go to school.** Please email info@lethbridgelittleleague.com to learn more about eligibility rules.